



**Criminalistics  
Laboratory**  
JOHNSON COUNTY SHERIFF'S OFFICE



# FIREARM & TOOLMARK EXAMINER I, II, III

**FSI=** Less than 3 yrs experience (\$56,742-\$72,612)

**FSII=** 3-8 yrs experience (\$63,980-\$83,491)

**FSIII=** At least 8 yrs experience (\$67,870-\$88,566)

**\*Certification and Advanced Degree (Masters/Doctorate) can each credit toward 1 year of experience.**

## About the Firearm & Toolmark Section:

The Firearm & Toolmark Section was expanded from two scientists to three in early 2018. Shortly thereafter, one of the section scientists was promoted to Assistant Lab Director. This opening seeks to fill the scientist position vacated by the promotion.

The Firearm/Toolmark section is responsible for function testing, NIBIN, microscopic comparison of ammunition components and toolmarks, serial number restoration and muzzle-to-garment distance determination. The section is also committed to meeting a 48 hour turnaround time for NIBIN entries and has observed excellent benefits as a result of this practice.

*"Leadership is a responsibility shared by all. We trust and empower each other to do the right thing for the right reason for the public good..."*

*- JOCO Leadership Philosophy*



## 2017 Statistics (FA-TM Section)

- Cases Submitted= 259
- Cases Completed= 154
- Section expanded to three examiners in 2018 to cover difference in cases submitted vs completed.



Photo Credit: www.mrobinsonphoto.com



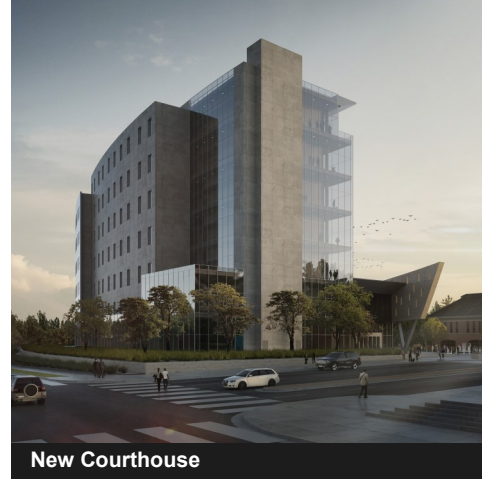
## Strong Public Support

Taxpayers in Johnson County highly value public safety. They have approved tax increases to build a **new County Courthouse** and a **new Medical Examiner's Office** for a combined total of \$245 million. Each project is scheduled to be completed in 2020.

## Why Choose JCSO

Johnson County Sheriff's Office follows the leadership of Sheriff Calvin Hayden and operates under the principles of a High Performance Organization. It is the largest law enforcement agency in the State of Kansas.

Our Laboratory was purpose-built in 2012 and currently is staffed by 38 scientists plus administration and support staff. Services offered include: Controlled Substances, DNA, Trace Evidence, Toxicology, Firearms & Toolmarks, Digital-Multimedia Evidence, Latent Prints and Crime Scene Investigation.



New Courthouse

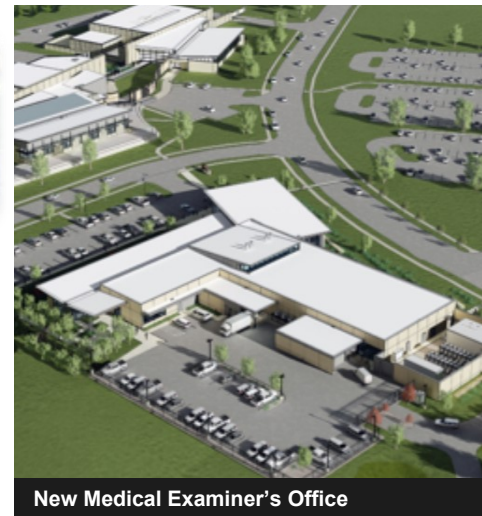


Photo Credit: www.mrobinsonphoto.com



## Our Team is Awesome!

As such, they earn market-leading salaries, regular annual increases, an excellent benefits package, a 3% match program for 457(b) retirement savings plans and enjoy paid gym memberships!



New Medical Examiner's Office



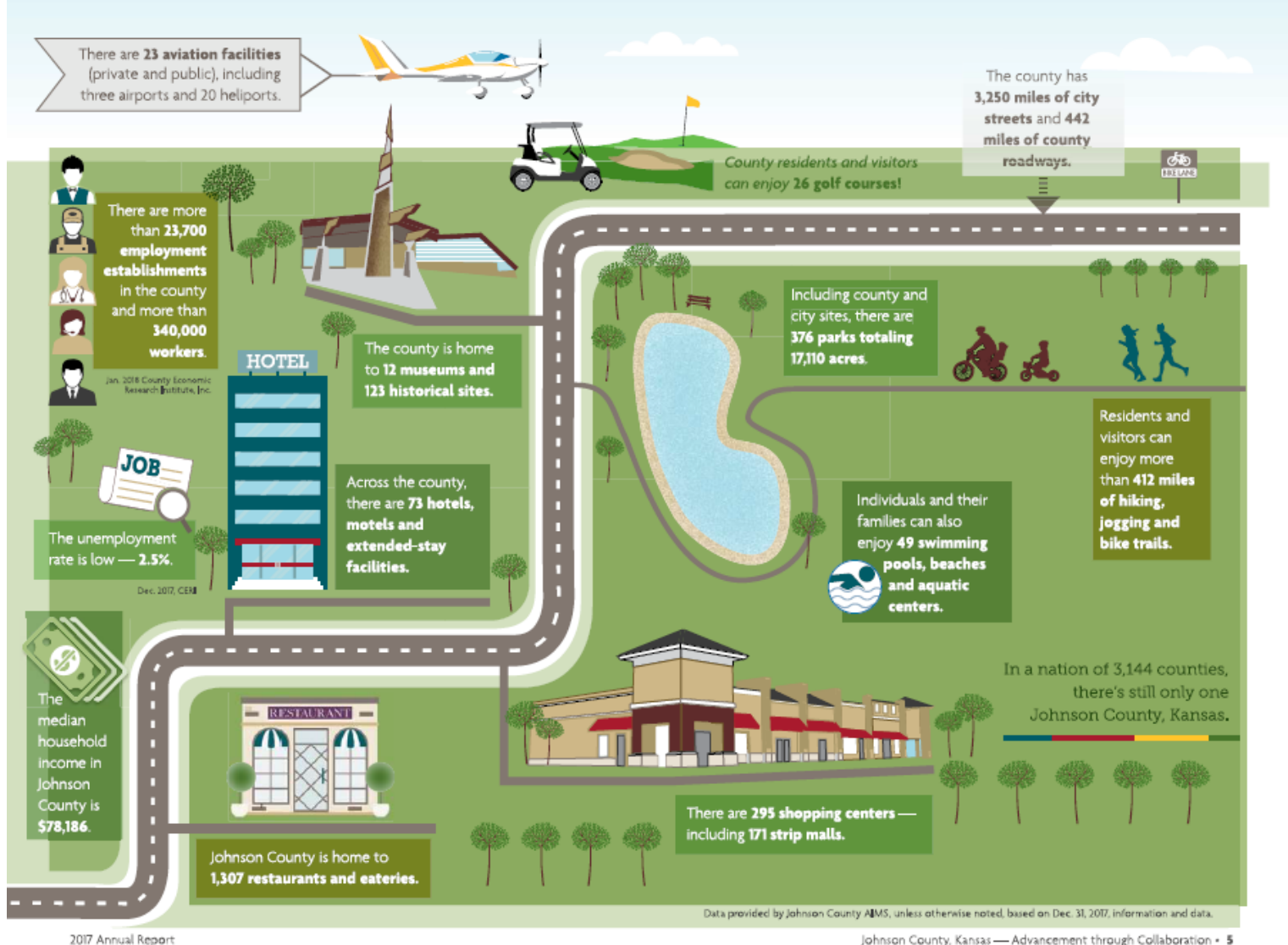
Photo Credit: www.mrobinsonphoto.com



Photo Credit: www.mrobinsonphoto.com

Our facilities are also pretty cool...





## Living Here

Johnson County Kansas is thriving and is an amazing place to live, work and play! For two straight years, [www.wallethub.com](http://www.wallethub.com) has ranked Overland Park, KS as **“America’s #1 Place to Raise a Family”** among the country’s 180 most populous cities. It also awarded Leawood, KS as **“America’s Best Small City to Live In”** among US cities with populations 25,000-100,000. Rankings are based on over 40 variables such as cost of housing, quality of schools, job market, restaurants per capita and recreation.

**JoCo Geography:** 473 square miles, nestled in the southwestern quadrant of the Kansas City metropolitan region.

Johnson County KS is also home to several large corporate headquarters such as Garmin and Sprint and within a short drive of major league Football, Baseball, Soccer and NASCAR.

## Prefer more greenery to your scenery?

Rolling green hills, farmland, pastures and several rural towns are a quick 15 minute commute from the Crime Lab!

Overall Rank (1 = Best) ↓	City ↓	Total Score ↓	'Family Fun' Rank ↓	'Health & Safety' Rank ↓	'Education & Child Care' Rank ↓	'Affordability' Rank ↓
1	Overland Park, KS	72.88	94	12	8	2
2	Irvine, CA	70.74	28	3	3	49
3	Fremont, CA	70.71	81	1	2	47
4	South Burlington, VT	70.41	181	5	1	33
5	Bismarck, ND	68.73	145	17	12	1
6	Plano, TX	68.17	127	4	46	5
7	Fargo, ND	66.73	102	25	9	19
8	Sioux Falls, SD	65.92	153	20	15	6
9	Huntington Beach, CA	65.76	90	9	6	77
10	Gilbert, AZ	65.32	64	13	63	9
11	Columbia, MD	65.27	67	50	56	3
12	Lincoln, NE	64.89	73	24	29	11
13	Madison, WI	64.52	70	42	44	7
14	Scottsdale, AZ	64.38	50	32	81	15
15	Seattle, WA	63.44	47	37	25	27

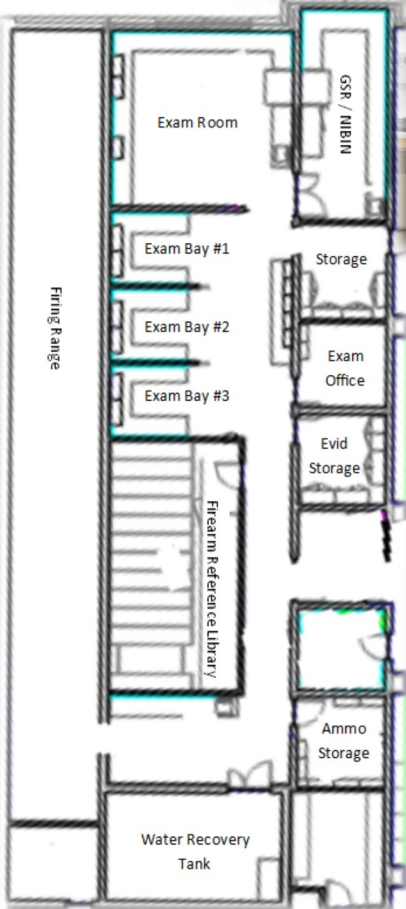
<https://wallethub.com/edu/best-cities-for-families/4435/>



## Apply Now at JOCOGOV.org

<https://www.jocogov.org/dept/human-resources/career-opportunities/jobs-open-public>

**Posting Dates: 10/19/2018 - 11/09/2018**



## Ready to Work!

The Firearm & Toolmark section has the capacity for a total of four examiners with a full-size firing range, water tank, cotton recovery box, remote firing cart, extensive firearm reference library, NIBIN BrassTrax and MatchPoint HD3D systems.



Photo Credit: www.mrobinsonphoto.com



Photo Credit: www.mrobinsonphoto.com

## The Team!

**David Wright**  
Assistant Lab Director  
Firearm & Toolmark Examiner  
(913) 826-3214  
[David.Wright@jocogov.org](mailto:David.Wright@jocogov.org)

**Jason Butell**  
Firearm & Toolmark Examiner  
(913) 826-3226  
[Jason.Butell@jocogov.org](mailto:Jason.Butell@jocogov.org)

**Zachary Carr**  
Firearm & Toolmark Examiner  
(913) 826-3262  
[Zachary.Carr@jocogov.org](mailto:Zachary.Carr@jocogov.org)

**(Your Name Here)**  
Firearm & Toolmark Examiner  
(913) 826-JOIN  
[Your.Name@jocogov.org](mailto:Your.Name@jocogov.org)

**Visit us online at:**

[www.jocosheriff.org](http://www.jocosheriff.org)

[www.jocogov.org](http://www.jocogov.org)

[www.facebook.com/JOCOSheriff/](https://www.facebook.com/JOCOSheriff/)

<https://twitter.com/jocosheriff>